

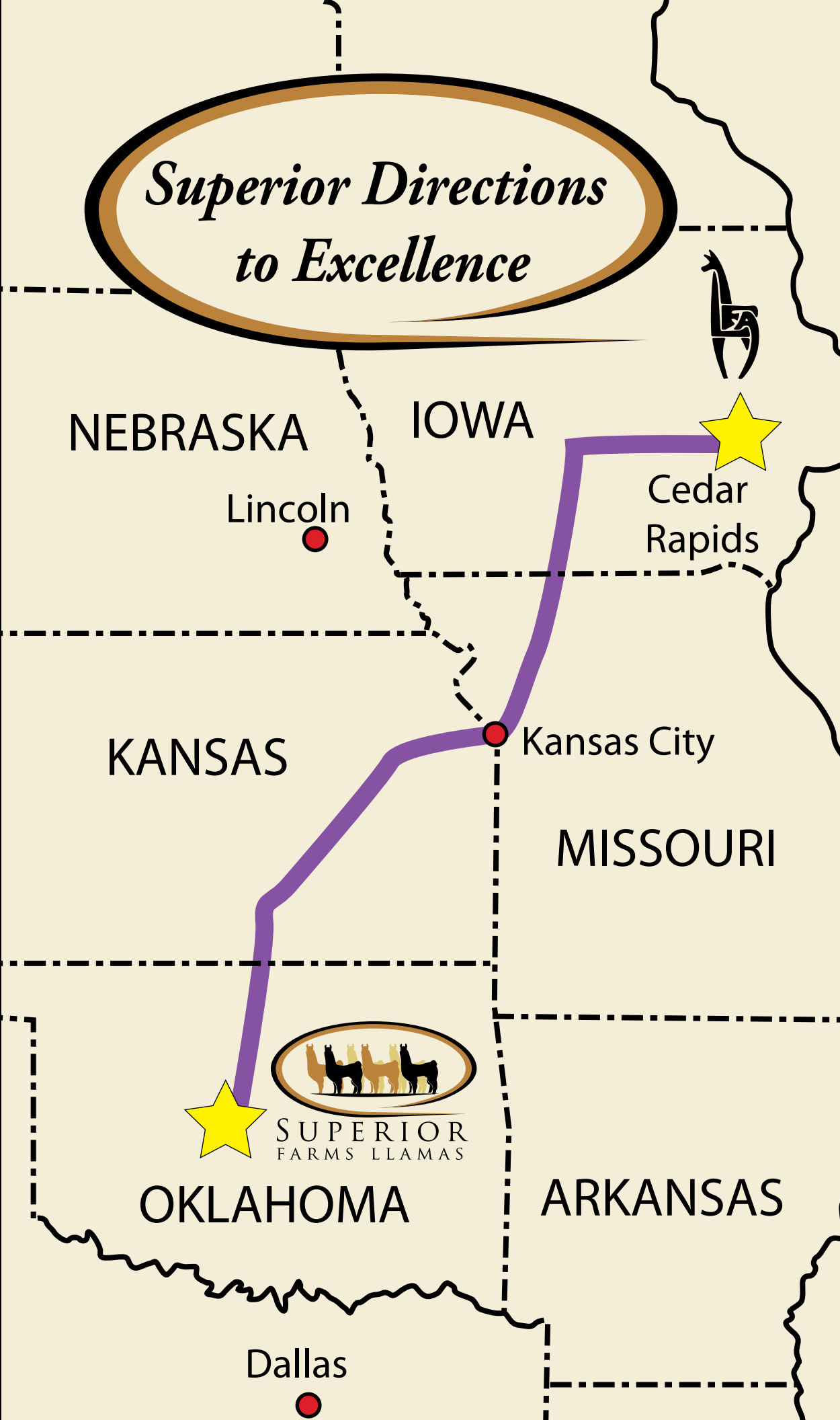
OCTOBER 2008

Interview with
Rebecca Wood

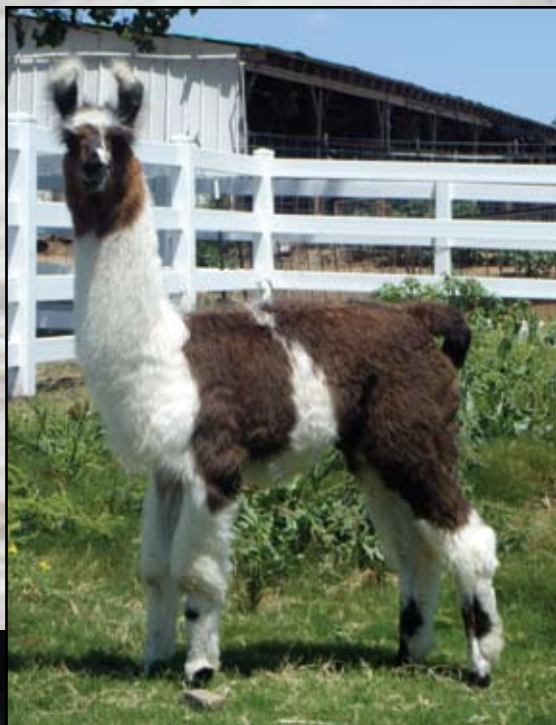
Hinterland
Sale

Going Par
Avion

*Superior Directions
to Excellence*



Committed to Excellence at home and on the road...



SF-OK Herodios (m)

Lucchero x Westerham's Santa Ana



SF-OK Whitehouse (m)

Lucchero x WLK Imtu Kool
½ interest purchased by East Fork Ranch



SF-OK Justify (m)

Lucchero x
Renegade's Sweet Justice

NEBRASKA
Lincoln



SUPERIOR
FARMS LLAMAS



OKLAHOMA

SHAWN NORMAN, FARM MANAGER • EVAN SNYDER, UNLOADING TECHNICIAN
5500 N SARA RD • YUKON, OK 73099
TEL: (405) 476-0399 • FAX: (405) 354-2332 • llamas@superiorfarms.net

*Offering outstanding progeny from
premier herd sires and exquisite bloodlines*

SF-OK E-Clipse

WSL Ekati x
BAL Copyright



Strike A Poze

Sir E Sur-Real x
Hard Rock's Absolute Charm



OWA

Cedar
Rapids

Kansas City

MISSOURI

Lot 59



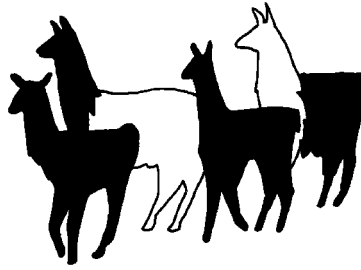
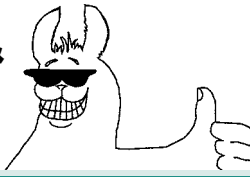
Lot 51



SF-OK Whist-Upon-A-Starr
Whist x Spirit Hill Stellar

Hightower
WSL Peruvian Quicksilver x Chilena Creole

Hummin' &
Thumbin'



Have a ride? Need a ride?
Contact LamaLink.com and
we will list your lama hauling
needs and services on our
website — **FREE.**

Hummin' & Thumbin'
entries will be placed
online at
www.lamalink.com

Tell our
advertisers
you saw them in

lamalink.com

lamalink.com™

your connection to the lama world

OCTOBER 2008

Volume 5, Issue 2
www.lamalink.com

EDITOR/PUBLISHER

Monica Tocci-Brown
editor@lamalink.com

WEB DESIGN

Beverly Storer

GRAPHIC DESIGN

Bonnie Bushman

CONTRIBUTING WRITERS

Venesa Carter, Laura Harrawood,
Jean Pascal Petit, Sue Wilde

CONTRIBUTING PHOTOGRAPHERS

Venesa Carter, Bob Storer

SUBSCRIBERS:

If the postal authorities alert us that your magazine is undeliverable, we have no further obligation unless we receive a corrected address within two years. POSTMASTER: Send address changes to LamaLink.com, 470 Riverside Road, Kalispell, MT 59901 or send via e-mail to subscriptions@lamalink.com.

LETTERS TO THE EDITOR:

Please include your name, address and phone number. Letters may be edited for clarity or space. Send mail to LamaLink.com, 470 Riverside Road, Kalispell, MT 59901. Or send e-mail to editor@lamalink.com

CONTACT US:

LamaLink.com
470 Riverside Road • Kalispell, MT 59901
406.755.5473
www.lamalink.com
editor@lamalink.com
advertising@lamalink.com • subscriptions@lamalink.com

LamaLink.com is published by New Wave Publishing, LLC. Reproduction of any portion of LamaLink.com magazine without written permission of the publisher is prohibited.

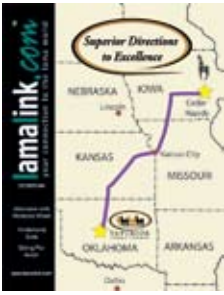
The opinions, beliefs and viewpoints expressed by the various authors and forum participants in this magazine and on the web site do not necessarily reflect the opinions, beliefs and viewpoints of LamaLink.com or its advertisers.

ADVERTISER INDEX

American Miniature Llama Assoc	pg 16	Northwind Farm	pgs 23-52
Argentine Llama Aficionados	pg 16	Ollendick Farms	pg 11
Buckhollow Llamas	pg 13	Paco-Vicuñas	pg 12
Canadian Mystic Meadows	pg 17	Posey Thisisit Llamas	pg 8
CityCats.biz	pg 23	Roxywood Farms	pg 7
Dreamweaver Creations Fiber Mill	pg 12	Sapaveco Ranches	pg 19
Eagle Dancer Ridge Llamas	pg 10	Show Me State Mini Llamas	pg 18
Freestate Llamas	pg 14	Silver Knoll Llamas	pg 9
Grand Slam Llama Event	pg 13	Superior Farms Llamas	cover, pgs 2 & 3
Holy Tea	pg 19	United Country RealQuest Realty	pg 17
Moonshadow Farm Llamas	pg 14	Wilde Country Rancho	pg 15
Morning Glory Minis	pg 9		

Please tell our advertisers you saw them in LamaLink.com!





On The Cover

OCTOBER 2008

2 **Superior Farms Llamas**
5500 N SARA RD • YUKON, OK 73099

Must Reads Features

- 12 **Hinterland Sale**
Summary
by **Venesa Carter**
- 14 **Going Par Avion with Air Canada**
Au revoir and Bonjour
by **Sue Wilde**
- 18 **Getting Anal About Fecal Analysis**
or "The Scoop on Poop"
by **Laura Harrawood**



12 As we parked in the back lot, we couldn't help but be taken by the beautiful, snow capped Sisters Mountains that look over the Hinterland ranch.

Within Every Issue

6 **Linking-Up**
Interview with Rebecca Wood
by **Sue Wilde**

CANADIAN CONNECTION

22 **A Rose By Any Other Name**
by **Sue Wilde**

21 **Where To Be**

23 **Classified Advertising**



14 ...the start of a wonderful new long distance friendship and a llama adventure extraordinaire!