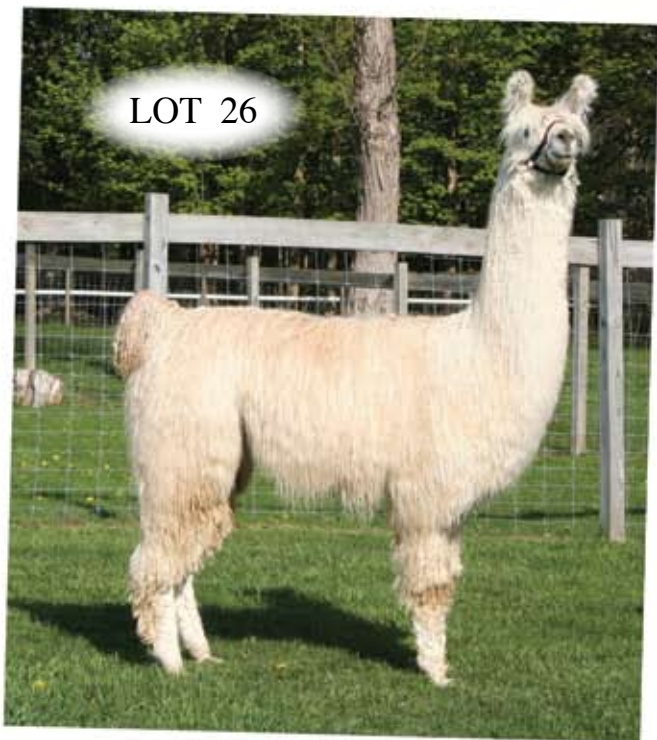


# FOR YOUR *Consideration*

AT THE LFA SALE ON  
SEPTEMBER 20TH 2008

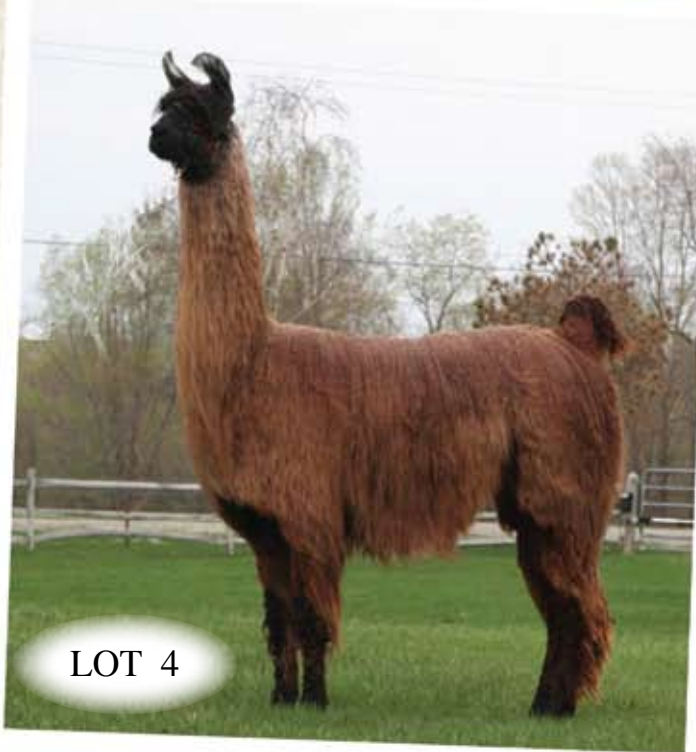
LOT 26



Sirius Possibility (F) 4/5/2007

*FVL Sirius x Bolivian Pepona — Co-Owned with Westerham Farm and Studio*

LOT 4



MHF Come What May (F) 10/07/2006

*No Compromise on the Ridge x Reina de la Spada*

LOT 45

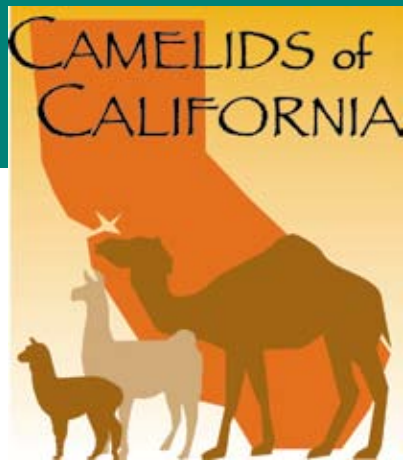


MHF Sirius Style (F) 6/1/2007

*FVL Sirius x MHF Picture Perfect  
Top 5 2008 Celebrity World Futurity*

MAPLE HILL FARMS





...Continued from page 20

have been involved in. I get more joy out of watching my son show than showing myself. In the future I hope to start a 4-H club to involve youth in our area.

**ALSA is in a state of restructuring, as some one who believes in the value of shows, what are some suggestions that you might have to promote the continuance of ALSA?**

Showing is such a big way of promoting our efforts of training and breeding. There has to be a guideline and I think ALSA is doing a great job. They just need to keep moving forward and be open to listening to everyone's input and concerns.

**You started your local llama club. What is the name of the club and how many farms are involved? What is the focus of your group?**

Yes, I have founded, Camelids of California. We just celebrated our 1-year anniversary at Rancho Machu Picchu and Coach Vineyards. The owners Sandy and Scott Mubarak, who have gone from llamas to wine, hosted our celebration with barbequed herb salmon, and chicken,

and served us wine from their vineyard throughout the day. Along with a tour of their llama ranch and vineyard.

Camelids of California has members from both alpaca and llama ranches. About one-third of our membership is alpaca folks. We have enjoyed learning from each other the differences in showing our animals, the grooming practices, and sharing care and business aspects.

The reason for the formation of Camelids of California (COC):

It became apparent to me that there was a big need for a more local club. From the San Diego area it is about a 2-½ hour drive and sometimes more to attend and participate in a llama club. To go it would take up to a whole day, and there were many people down here not attending for this reason.

So, I started collecting from our local feed stores, veterinarians, and friends a contact list of llama and alpacas in the area.

We had our first meeting July of 07, where we invited people to come and be a voice of the formation. It was a huge success. My main focus was to get the alpaca and the llama community together. To network and be a resource for one another.

Our 2<sup>nd</sup> meeting was held in September of 07, which was to structure the club. After this meeting I had a great contact list established.

In October, we were in the middle of the California wild fires. One of our members, whom I had just met at the September meeting, called me. Her house had just burned down, she was in her car, her ranch family had the truck and trailer, all the llamas they could load, and were

driving around trying to figure out where to go. So I took them in for 2 ½ weeks, 16 llamas, 2 dogs, several cats, and four people whom I did not know.

I have been a dispatcher for over 20-years, so after receiving her call, I sat down at the kitchen table with my contact list from our first two meetings, two phones, and my computer. For three days I organized rescue, evacuations, shelter, food and water for animals. If it had not been for the formation of COC this could not have been accomplished.

For my efforts in the wild fires and the formation of COC I have just received an award from LANA, Llama Association of North America, the Adult Follow Me Award. I am very honored and proud of this award. I want to thank everyone who pulled together during this disaster and donated time, money, collected donations, gas, supplies, whatever was needed - people were there to help. This shows how strong and wonderful the Camelid community is!

Strength at the local level is so important. What are some things your club is doing to promote llamas?

The Mission of Camelids of California is to promote and share information with the public and each other, to increase knowledge and awareness on the care, well-being, and versatility of camelids. Our group fosters a community in which members may meet new people with common interests and form lasting relationships. We are about sharing and learning in a friendly atmosphere, providing educational opportunities, and sponsoring venues for having fun with our animals and one another.

*Continued on page 26...*

Paco-Vicuñas  
Linda Hayes  
haystees@sopris.net Carbondale, CO 800-815-0488  
  
www.paco-vicunas.com

Getcha Some  
*Satisfaction*  
Lot 33 



# Shop Wilde Country Rancho.com

*Lot 56!*



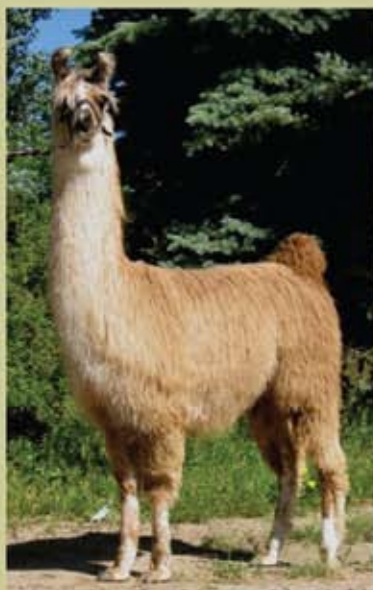
WCR Hot Tamale  
Bred to Maserati!

**LFA 2008!**  
**We're Setting  
the Sale on Fire!**

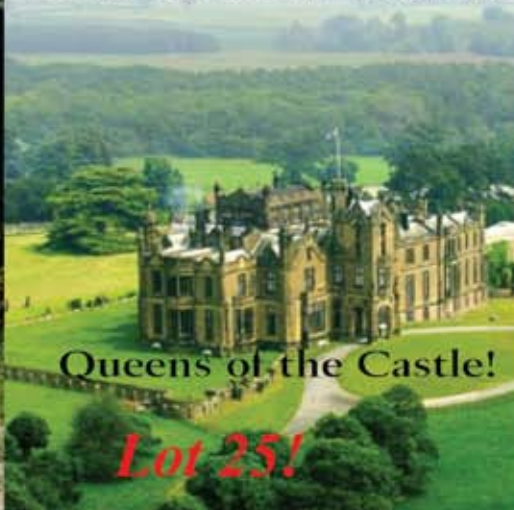
LLL Zabrina  
Amazing gray line!  
Bred to Maserati!



*Lot 73!*

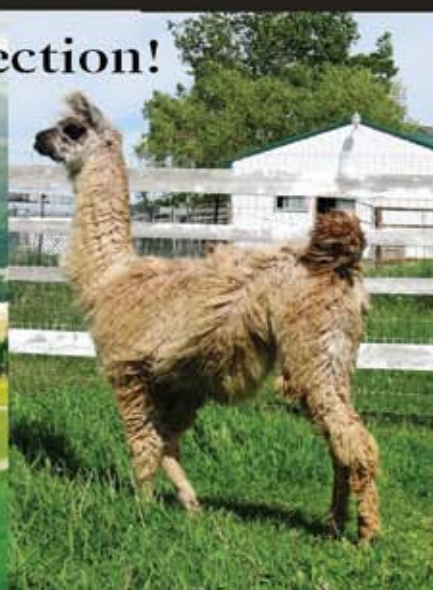


**The French Connection!**



Queens of the Castle!

*Lot 25!*



WCR French Bliss! *Two for One!* WCR Miss Chatelaine



PLAN NOW TO ATTEND  
**LFA WORLD CHAMPIONSHIP SHOW & SALE**  
SEPTEMBER 19-21, 2008 • CEDAR RAPIDS, IOWA

## Schedule of Events

### Thursday 9/18/08

8:00 am Arrival and stalling of animals, setup displays vendor and sponsor areas

### Friday 9/19/08

7:00 am Fresh Pastries and complimentary coffee  
continued arrival and set up  
7:30 am ALSA exhibitor and Judges meeting  
8:00 am "Fall Harvest" Single point ALSA show begins  
9:00 am - 4:00 pm Llama Fiber Demonstrations  
3:00 pm Futurity Jackpot Obstacle Classes —  
Geriatric class followed by the Open class

### Evening of Camaraderie

6:00 pm Cocktails and Hors d'oeuvres served at the Equestrian Center

### Saturday 9/20/08

7:00 am Fresh Pastries and complimentary coffee  
8:00 am Display and Vendor areas open  
9:00 am - 4:00 pm Llama Fiber Demonstrations  
9:00 am Amateur Futurity begins with the male class – Show arena  
10:30 am Jackpot Non Breeder Futurity  
11:15 am to 12:00 pm Bloody Mary's and Tangy Mimosas served as the individual  
introduction of Sale Animal is presented across the  
RED CARPET  
12:00 pm to 12:45 pm Hands on inspection of sale animals  
12:45 pm to 1:45 pm Lunch is Served  
1:45 pm to 2:00 pm LFA Annual Membership Meeting  
2:00 pm Llama Futurity Association Sale begins  
Snacks and beverages will be served during the auction

### Sunday 9/21/08

7:00 am Fresh Pastries and complimentary coffee  
8:00 am Futurity Classes begin — starting with the Suri Male  
Llama Class  
11:30 am to 2:00 pm Lunch will be available on a cash basis  
3:30 pm At the completion of all Futurity classes, announcement  
of ALL Futurity Class Top 10 and Class Champions and  
presentation of the awards





VISIT THE REDESIGNED LFA WEBSITE FOR ALL THE  
2008 SHOW ENTRY FORMS. SEND YOUR ENTRIES IN EARLY!

[www.thelfa.org](http://www.thelfa.org)

## 2008 LFA EVENT SPONSORS

### DIAMOND SPONSORS...

**Ken & Celia Austin**

Raindance Ranch, Newberg, OR

**Mike & Wendy Gerken**

Hard Rock Llama Company, Ada, OH

**John & Debra McDougall**

Westerham Farm & Studio Montpelier, VA

**Malcolm & Carol Ann Tallmon**

Carolllama Farms, Weatherford, TX

**Keith & Patti Wattigney**

P.K. Mini's, Belle Chase, LA

**Lew & Jennifer McGinnis**

Superior Farms Llamas, Oklahoma City,  
OK

### GOLD LEADERSHIP SPONSORS...

**Gordon & Pam Jensen**

Hid - n - Hills Llamas, Cochrane, WI

**Doug & Kamala Overman**

Overman Llamas, Otterbein, IN

### GRAND ENTREPRENEUR SPONSORS...

**Tom & Barb Parsons**

Animal Acres Llamas, Douseman, WI

**Dennis & Tracey McGinnis**

Bear Korner Llamas, Warrens, WI

**Barbara & John Reinecke**

La Mara Springs, Fond du Lac, WI

**Phil Feiner & Larry Rothenberg**

Maple Hill Farms, Stephentown, NY

### SUPPORTING SPONSORS...

**Kurt & Dr. Kristi Brown**

The Brownderosa, Sparta, WI

**Dan & Marilyn Milton**

LlamaQuest

**Darrell & Merlene Anderson**

Solid Rock Llamas, West Lafayette, IN

**Sharon & Jerry Williamson**

Pine Haven Llamas, Trempealeau, WI

**John, Marcia & Kelley Ollendick**

Ollendick Farms, Tomah, WI

**Mark and Susan Smtih**

Mark Smith Farms, Crawfordsville, IN

**International Llama Registry**

Kalispell, MT

**Mike & Janet Wilkins**

Wilkins Livestock, Geneva, NE

### FRIENDS OF THE LFA

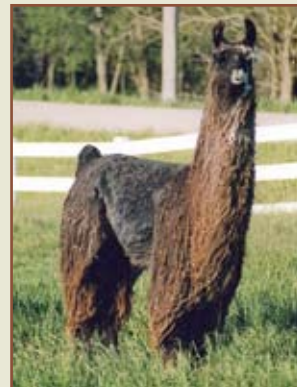
**Chris & Venesa Carter**

Criven Llamas, Rogersville, MO



**Strike A Poze (f)**

Consignment of Lew & Jennifer McGinnis



**XL Bar Stardom (f)**

Consignment of Mary Pendergast



**Overman Albiona (f)**

Consignment of Doug & Kamala



**NV's Opalescences (f)**

Consignment of Terri Strouse & Susan Gray



[www.thelfa.org](http://www.thelfa.org)